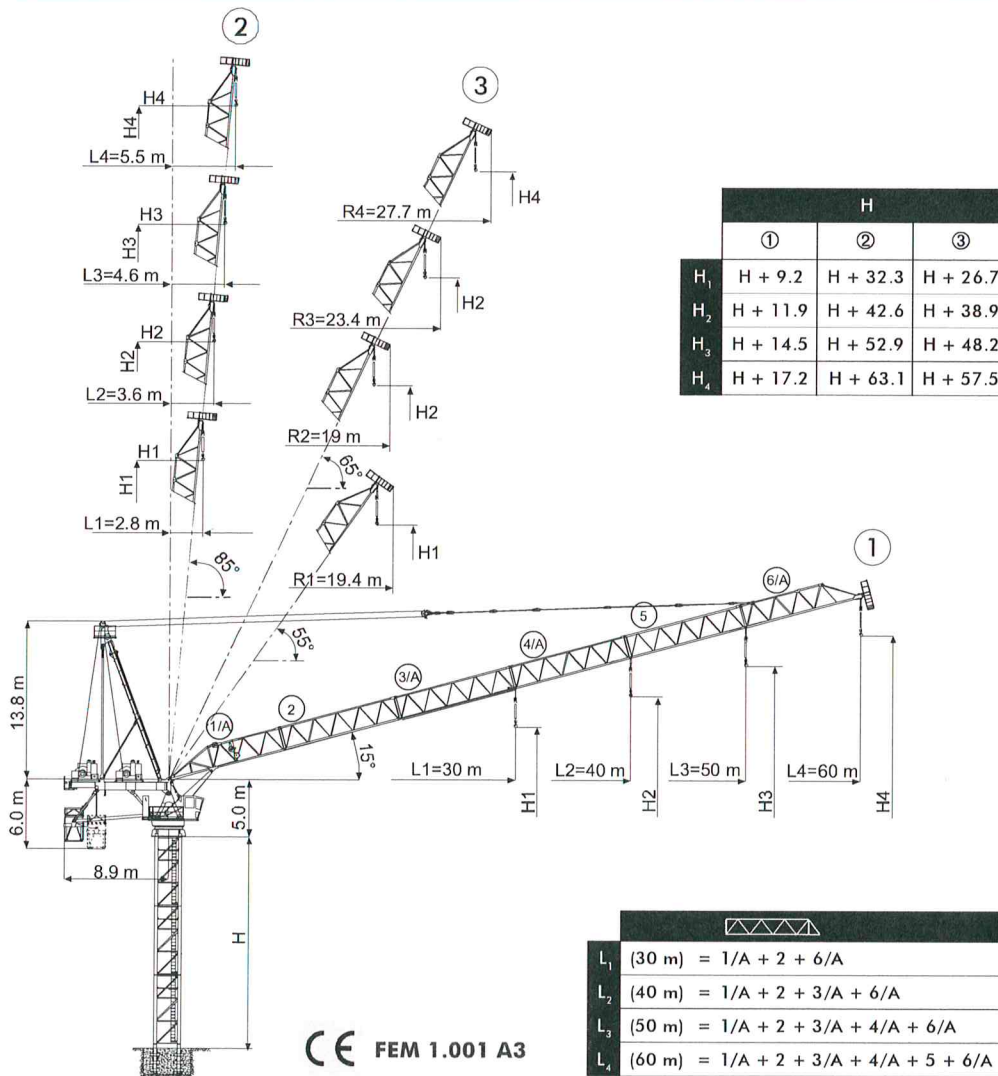




TEREX® | COMEDIL

- Gru a torre a braccio impennabile
- Luffing Jib Tower Crane • Grue à tour à flèche relevable
- Turmdrehkran mit Steilstellung-Ausleger
- Grúa torre de pluma abatible



CE FEM 1.001 A3

In vigore dal: 01 gennaio 2007. Le specifiche del prodotto ed i prezzi sono soggetti a modifica senza alcun obbligo di preavviso. Le fotografie e/o disegni nel presente documento hanno uno scopo meramente illustrativo. Per il corretto utilizzo di ciascuna attrezzatura, si rimanda allo specifico manuale d'istruzioni. L'inosservanza di quanto previsto nel manuale d'istruzioni nell'utilizzo dell'attrezzatura, così come un comportamento irresponsabile potrebbero cagionare gravi lesioni o il decesso. Le nostre attrezzature sono coperte solo ed esclusivamente dalla garanzia *standard* scritta prevista per ogni specifico prodotto, con esclusione di qualsivoglia ulteriore garanzia, sia tacita che espressa, da parte di Terex. I prodotti e servizi elencati possono essere marchi di fabbrica, di servizi o ragioni sociali appartenenti a Terex Corporation e/o alle sue affiliate operative sia negli USA che in altri paesi e tutti i diritti s'intendono riservati. "TEREX" è un marchio appartenente a Terex Corporation e registrato sia negli USA che in altri paesi. Copyright © 2007 Terex Corporation.

Effective Date: January 01, 2007. Product specifications and prices are subject to change without notice or obligation. The photographs and/or drawings in this document are for illustrative purposes only. Refer to the appropriate Operator's Manual for instructions on the proper use of this equipment. Failure to follow the appropriate Operator's Manual when using our equipment or to otherwise act irresponsibly may result in serious injury or death. The only warranty applicable to our equipment is the standard written warranty applicable to the particular product and sale and Terex makes no other warranty, express or implied. Products and services listed may be trademarks, service marks or trade-names of Terex Corporation and/or its subsidiaries in the USA and other countries and all rights are reserved. "TEREX" is a registered trademark of Terex Corporation in the USA and many other countries. Copyright © 2007 Terex Corporation.

UTEDOC. REV.003

CTL 630-32 HD23

CTL 630-32

Diagramma di portata
Load Diagram

Courbes de charges
Lastkurven

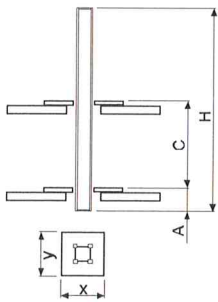
Curvas de cargas

CTL 630-32													
		20	22	25	27	30	35	40	45	50	55	60	
16 t	- 35 m	16,00	16,00	16,00	16,00	16,00	16,00	13,90	12,27	10,96	9,89	9,00	
16 t	- 41,9 m	16,00	16,00	16,00	16,00	16,00	16,00	16,00	14,82	13,20			
32 t	- 21,8 m	32,00	31,78	27,80	25,64	22,93	19,46	16,85	14,82	13,20			
16 t	- 40 m	16,00	16,00	16,00	16,00	16,00	16,00	16,00					
32 t	- 22,6 m	32,00	32,00	28,84	26,60	23,80	20,20	17,50					
16 t	- 30 m	16,00	16,00	16,00	16,00	16,00							
32 t	- 22,8 m	32,00	32,00	29,08	26,82	24,00							

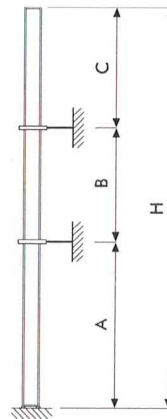
Altre installazioni
Other configurations

Autres implantations
Aufstellmöglichkeiten

Otras implantaciones



i
Gru climbing
Bottom climbing crane
Télescage sur dalles
Kletterkran im Gebäude
Télescage grúa trepadora



i
Gru ancorata
Crane tied to the structure
Grue ancrée
Geankerter Kran
Grúa anclada

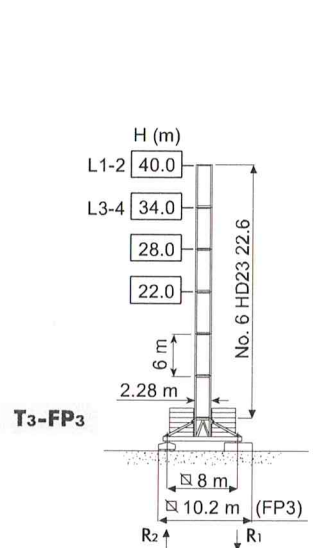
		HD 23 26/A							
		L1	L2	L3	L4	L1	L2	L3	L4
Vento MAX fuori servizio (km/h)		200		164	200				
A _{min}		0.59							
C _{min}		14				16			
H _{max}		54	48		54	48			
x		2.95							
y		2.48							

		HD 23 26/A							
		L1	L2	L3	L4	L1	L2	L3	L4
Vento MAX fuori servizio (km/h)		225		200	225				
A _{min}		0.59							
C _{min}		18				20		21	
H _{max}		54	48		54	48			
x		2.95							
y		2.48							

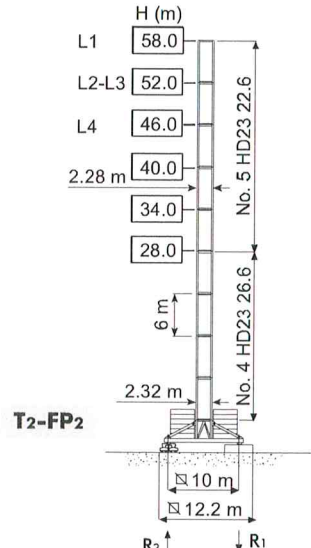
		HD23 R1		HD23 R2	
		[m]		[m]	
		L ₃₋₄	L ₁₋₂	L ₃₋₄	L ₁₋₂
A _{min/max}		30/30		30/54	30/60
B _{min/max}		24/30		24-30	24/36
C _{max}		24-(30 <i>i</i>)	30-(36 <i>i</i>)	24-(30 <i>i</i>)	30-(36 <i>i</i>)
H _{max}		i			

Torre **I** Tour **F** Torre **E**
 Tower **GB** Turm **D**

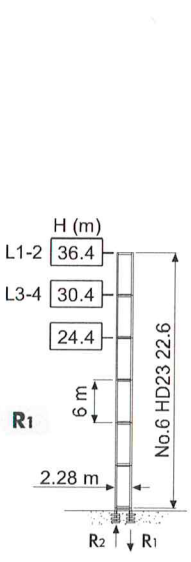
HD23



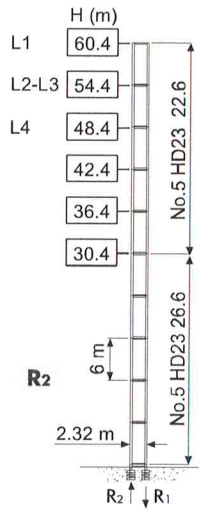
R1	1800 kN ●	1500 kN ◊
R2	0	200
	130 t	



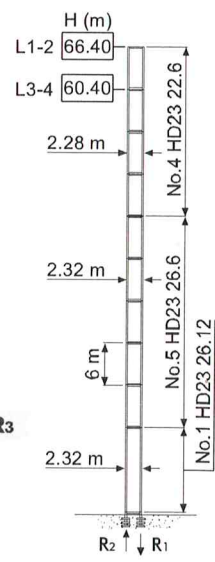
R1	1900 kN ●	1900 kN ◊
R2	0	0
	160 t	



R1	3300 kN ●	2800 kN ◊
R2	2300 kN ●	1970 kN ◊
	102 t	



R1	4300 kN ●	4800 kN ◊
R2	3100 kN ●	3900 kN ◊
	132 t	



CTL 630-32

Meccanismi **I** Mechanisms **GB** Mécanismes **F** Antriebe **D** Mecanismos **E**

	SRWB 102 160/5	301 * kVA	400 V - 50 Hz
	SRWB 122 160/5	325 * kVA	460 V - 60 Hz
	110 AWL 160	297 * kVA	400 V - 50 Hz / 460 V - 60 Hz
			2000/14/CE modificata

* Gru senza traslazione / Crane without travelling equipment / Grue sans translation / Krane ohne Schienenfahren / Grúa sin traslación

			m/min	t	kW				
	SRWB 102 160/5 50 Hz		0 ~ 32	16	102	600 m			
			0 ~ 50	10					
			0 ~ 80	6					
		0 ~ 125	3.5						
			0 ~ 16	32					
			0 ~ 25	20					
	0 ~ 40		12						
	SRWB 122 160/5 60 Hz		0 ~ 38	16	112	600 m			
			0 ~ 60	10					
			0 ~ 96	6					
0 ~ 150			3.5						
		0 ~ 19	32						
		0 ~ 30	20						
		0 ~ 48	12						
		0 ~ 76	7						
		110 AWL 160 LLC D1		0 ~ 26			16	110	340 m
				0 ~ 36			11.3		
0 ~ 50	8.1								
0 ~ 69	5.6								
	0 ~ 80		0.8						
	0 ~ 13		32						
	0 ~ 18		22.6						
	0 ~ 25		16.2						
	0 ~ 35		11.2						
	0 ~ 40		1.6						

	LWL 11000	2.8 min	110 kW
	SCC 2 2 132 L	0 ~ 0.65 r.p.m.	2 x 14 kW
	● TVF 2RT 4M11	0 ~ 24 m/min	4 x 11 kW
	▲ TSR 4RG 4M8	12 ~ 24 m/min	4 x 80 Nm
	■ TVF 4RT 8M11	0 ~ 24 m/min	8 x 11 kW

	●	▲	■
	Max. H [m]		
T ₃	28.1	40.1	40.1
T ₂	40.1	70.1	70.1
P ₁	-	40	40

	Sollevamento	I Hoisting	GB Levage	F Heben	D Elevación	E
	Brandeggio	Luffing	Relevage	Ausleger-Einziehen	Elevación de pluma	
	Rotazione	Slewing	Orientation	Schwenken	Orientación	
	Traslazione	Travelling	Translation	Schienenfahren	Traslación	
	Direttiva sul livello acustico	Directive on noise level	Directive sur le niveau acoustique	Richtlinie für den Schall-Leistungspegel	Directiva sobre el nivel acustico	
	Consultateci	Consult us	Nous consulter	Auf Anfrage	Consultarnos	
	Potenza totale richiesta	Power requirements	Puissance totale nécessaire	Geforderte Stromstärke	Potencia necesaria	
	Alimentazione	Power supply	Alimentation	Stromversorgung	Alimentación	